

## HORIZON AND DIRECTIONAL GYROS - MAINTENANCE PRACTICES

### 1. General

- A. This section gives information to remove and install the components of the electronically driven horizon and directional gyros.

### 2. Electrical Horizon Gyro Removal/Installation (Model 208 Only)

- A. Remove Electrical Horizon Gyro (Refer to Figure 201).
- (1) Remove screws and washers securing right removable flight panel, and slide panel aft to gain access to back of gyro (1).
  - (2) Disconnect electrical plug (2).
  - (3) Cut sta-strap (10).
  - (4) Remove screws (3), securing gyro (1) and faceplate (4) to flight panel, and lift gyro (1) from flight panel.
  - (5) Remove hose (11).
- B. Install Electrical Horizon Gyro (Refer to Figure 201).
- (1) Position hose (11) and sta-strap (10).
  - (2) Position gyro (1) and faceplate (4) to removable flight panel.
  - (3) Install screws (3).
  - (4) Connect sta-strap (10).
  - (5) Connect electrical plug (2).
  - (6) Slide removable flight panel back against instrument panel, and install screws and washers.
  - (7) (For airplanes equipped with KFC-225 autopilot.) If a new unit is installed or the unit is calibrated, do a system alignment. Refer to Introduction, the List of Manufacturers Technical Publications for the manufacturer's installation manual.

### 3. Electrical Directional Gyro Removal/Installation (Model 208 Only)

- A. Remove Electrical Directional Gyro (Refer to Figure 202).
- (1) Remove screws and washers, securing right removable flight panel, and slide panel aft to gain access to back of gyro (5).
  - (2) Disconnect electrical plug (6).
  - (3) Cut sta-strap (10).
  - (4) Remove screws (7), securing gyro (5) and faceplate (8) to flight panel, and lift gyro (5) from flight panel.
  - (5) Remove hose (11).
- B. Install Electrical Directional Gyro (Refer to Figure 202).
- (1) Position hose (11) and sta- strap (10).
  - (2) Position gyro (5) and faceplate (8) to removable flight panel.
  - (3) Install screws (7).
  - (4) Connect sta-strap (10).
  - (5) Connect electrical plug (6).
  - (6) Slide flight panel back against instrument panel, and install screws and washers.
  - (7) (For airplanes equipped with KFC-225 autopilot.) If a new unit is installed or the unit is calibrated, do a system alignment. Refer to Introduction, the List of Manufacturers Technical Publications for the manufacturer's installation manual.

### 4. Electrical Horizon Gyro Removal/Installation (Model 208B and 208B Passenger)

- A. Remove Electrical Horizon Gyro (Refer to Figure 202).
- (1) Remove screws and washers securing right removable flight panel, and slide panel aft to gain access to back of gyro (2).
  - (2) Disconnect electrical plug (1).
  - (3) Remove screws (5) securing faceplate (4) and gyro (2), and lift gyro (2) from flight panel.

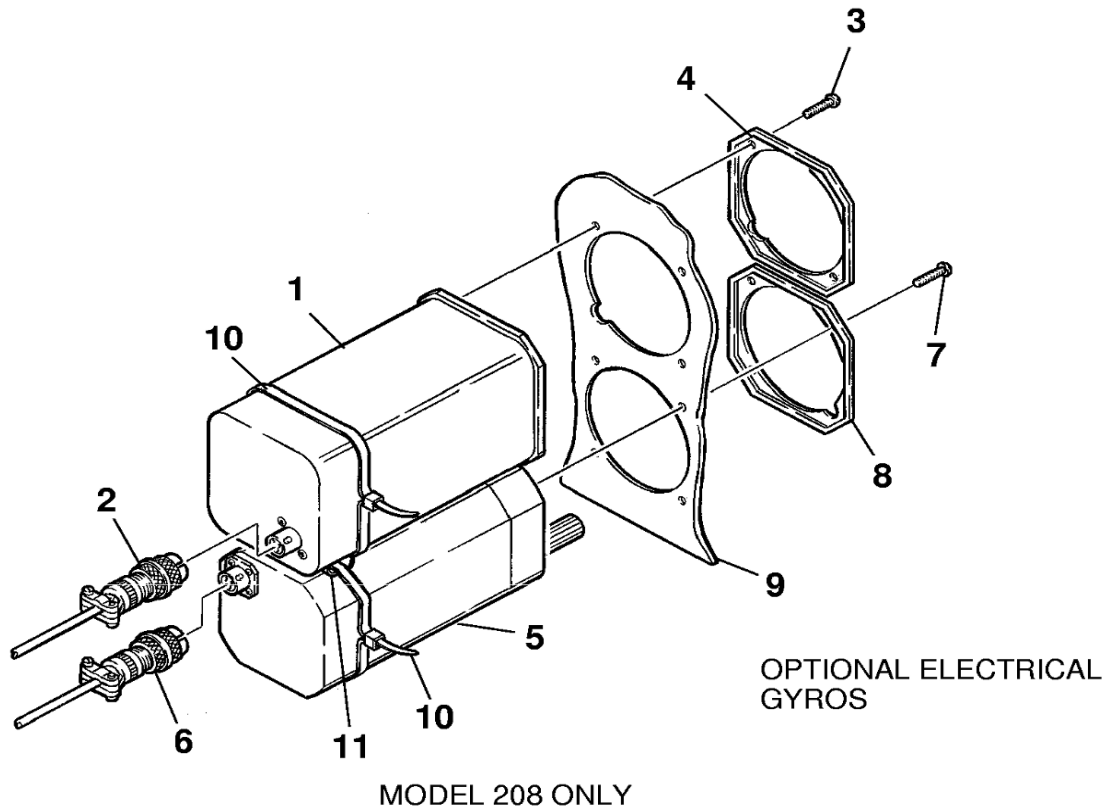
- B. (Refer to Figure 202).
  - (1) Position gyro (2) in removable flight panel, and install faceplate (4) and gyro to panel using screws (5).
  - (2) Connect electrical plug (1) to gyro(2).
  - (3) Slide removable flight panel back against instrument panel, and install screws and washers.
  - (4) (For airplanes equipped with KFC-225 autopilot.) If a new unit is installed or the unit is calibrated, do a system alignment. Refer to Introduction, the List of Manufacturers Technical Publications for the manufacturer's installation manual.

## 5. HSI Indicator Removal/Installation (Model 208B and 208B Passenger)

- A. Remove HSI Indicator (Refer to Figure 202).
  - (1) Remove screws and washers securing left removable flight panel, and slide panel aft to gain access to back of HSI indicator (7).
  - (2) Disconnect electrical plugs (6) and (11).
  - (3) Remove screws (10) securing faceplate (9) and HSI (7), and lift HSI (7) from flight panel.
- B. Install HSI Indicator (Refer to Figure 202).
  - (1) Position HSI (7) in removable flight panel, and install faceplate (9) and HSI (7) to panel using screws (10).
  - (2) Connect electrical plugs (6) and (11) to HSI (7).
  - (3) Slide panel back against instrument panel, and install screws and washers.

Figure 201 : Sheet 1 : Optional Electric Gyros Installation

A22312

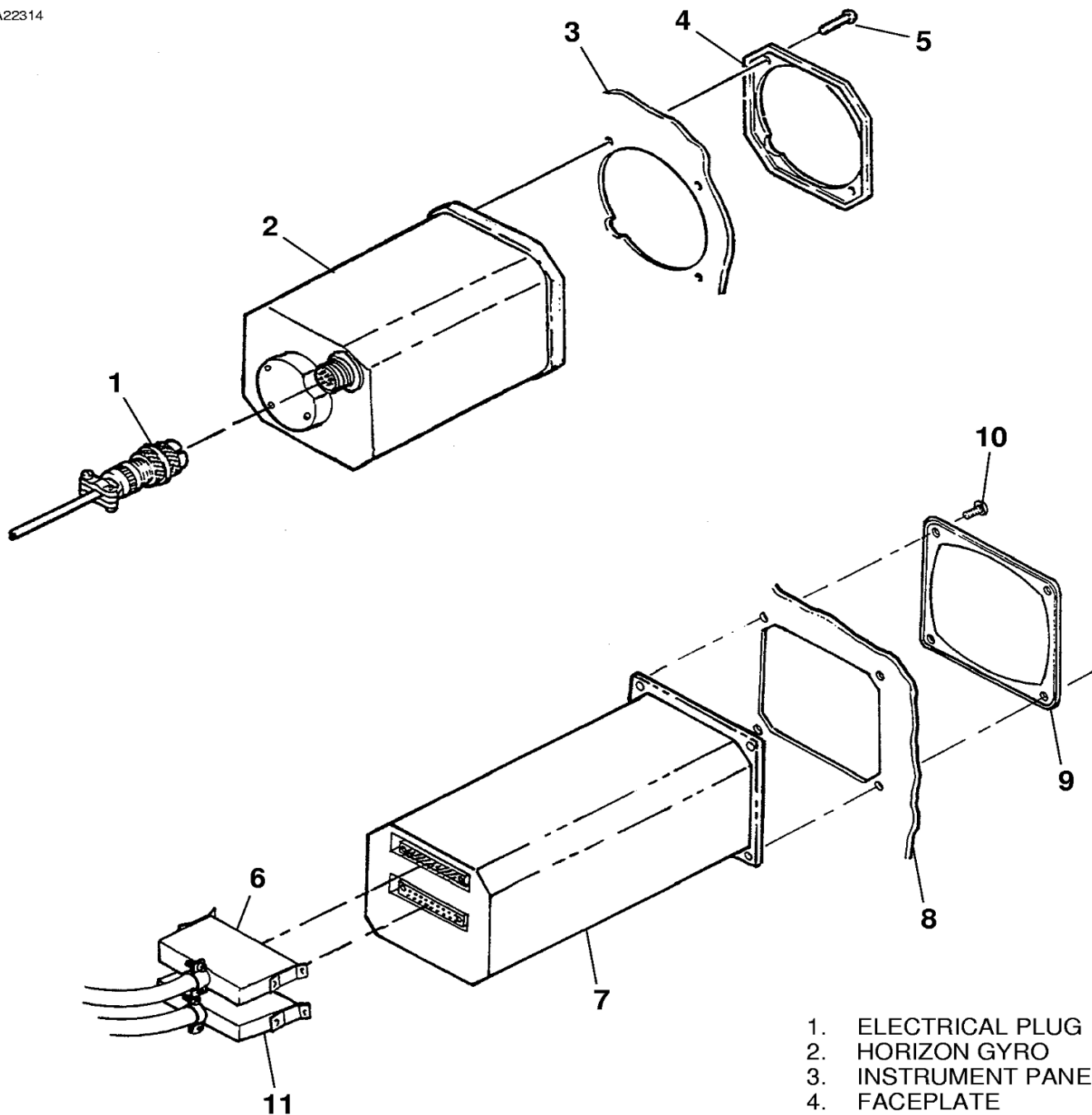


1. HORIZON GYRO
2. ELECTRICAL PLUG
3. SCREW
4. FACEPLATE
5. DIRECTION GYRO
6. ELECTRICAL PLUG
7. SCREW
8. FACEPLATE
9. REMOVABLE FLIGHT PANEL
10. STA-STRAP
11. HOSE

26181184

Figure 202 : Sheet 1 : Electric Gyros Installation

A22314



- 1. ELECTRICAL PLUG
- 2. HORIZON GYRO
- 3. INSTRUMENT PANEL
- 4. FACEPLATE
- 5. SCREW
- 6. ELECTRICAL PLUG
- 7. HSI
- 8. INSTRUMENT PANEL
- 9. FACEPLATE
- 10. SCREW
- 11. ELECTRICAL PLUG

AIRPLANES 20800084 AND ON  
AND 208B0214 AND ON

2618X1186